

2022

with effect from
à compter du
1 July 2021

Remuneration & pensions OJ 2021/C 501/05

Rémunérations & pensions JO 2021/C 501/05

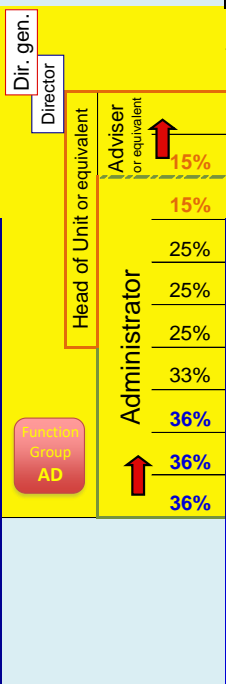
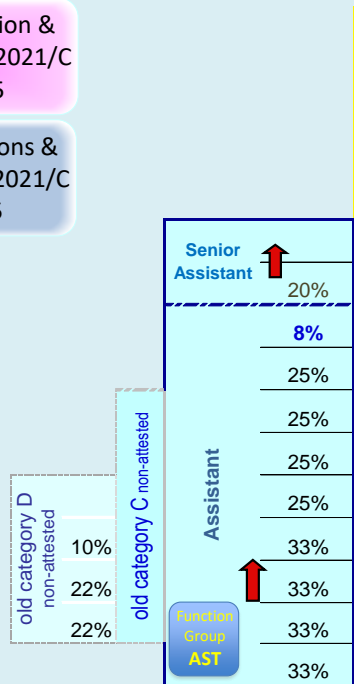
Salary grid – Grille des traitements

Union Européenne: traitements (bruts) applicables en Belgique et au Luxembourg

basic salaries for officials and temporary staff traitements de base des fonctionnaires et agents temporaires

Steps - Échelons →

Grades	1	2	3	4	5
AD 16	19.490,71	20.309,74	21.163,17		
AD 15	17.226,53	17.950,42	18.704,71	19.225,11	19.490,71
AD 14	15.225,35	15.865,16	16.531,83	16.991,77	17.226,53
AD 13	13.456,69	14.022,15	14.611,37	15.017,90	15.225,35
AD 12	11.893,46	12.393,23	12.914,02	13.273,30	13.456,69
AD/AST 11	10.511,83	10.953,54	11.413,82	11.731,38	11.893,46
AD/AST 10	9.290,71	9.681,10	10.087,94	10.368,58	10.511,83
AD/AST 9	8.211,43	8.556,48	8.916,05	9.164,09	9.290,71
AD/AST 8	7.257,53	7.562,50	7.880,28	8.099,53	8.211,43
AD/AST 7	6.414,44	6.683,99	6.964,85	7.158,63	7.257,53
AD/AST 6	5.669,29	5.907,53	6.155,76	6.327,03	6.414,44
AD/AST 5	5.010,72	5.221,27	5.440,67	5.592,05	5.669,29
AST 4	4.428,64	4.614,72	4.808,64	4.942,43	5.010,72
AST 3	3.914,15	4.078,65	4.250,05	4.368,27	4.428,64
AST 2	3.459,47	3.604,83	3.756,32	3.860,83	3.914,15
AST 1	3.057,60	3.186,07	3.319,95	3.412,34	3.459,47



AST/SC 6	4.970,95	5.179,84	5.397,50	5.547,65	5.624,31
12% AST/SC 5	4.393,49	4.578,11	4.771,16	4.903,20	4.970,95
15% AST/SC 4	3.883,12	4.046,28	4.216,32	4.333,62	4.393,49
17% AST/SC 3	3.432,01	3.576,23	3.726,53	3.830,19	3.883,12
20% AST/SC 2	3.033,32	3.160,80	3.293,63	3.385,25	3.432,01
25% AST/SC 1	2.680,96	2.793,62	2.911,02	2.991,98	3.033,32

suite à une promotion, le fonctionnaire est classé à l'échelon 1 du grade supérieur

tous les 2 ans, le fonctionnaire ou agent temporaire avance, en principe, à l'échelon suivant de son grade

01-10-2021
SSM Luxembourg:
2.708,32 €

	1	2	3	4	5
% progression		4,20%	4,20%	2,78%	1,38%

Union Syndicale Fédérale EPSU CJ

Sharing experience Building solidarity